



YOUR PARTNER IN
SAFETY AND LEISURE
SINCE 1975



HYUNDAI LIFEBOATS

We are a company that manufactures safe ships

CONTENTS



COMPANY INFORMATION
(3-7)



LIFEBOAT SYSTEMS
(8-13)



LIFEBOAT DAVIT SYSTEMS
(14-16)



SPECIAL SHIPS
(17)



ENGINE
(18-19)



HOOK
(20)



WORLD WIDE SERVICE
(22-23)

MANAGEMENT PHILOSOPHY

VISION

WE ARE A GLOBAL LEADING COMPANY THAT MANUFACTURES
SAFE SHIPS

CORE VALUE

CHALLENGE & PASSION
TECHNOLOGY & QUALITY
COMMUNICATION & COLLABORATION

CORPORATE CULTURE

VALUE CREATION FOR CUSTOMERS
RESPONSIBLE MANAGEMENT AND FAIR COMPETITION
THE CRADLE OF CHALLENGE AND ORIGINALITY

HISTORY

With more than 40 years of history and tradition, HLB is the world best various ships manufacturer and the only lifeboat manufacturer in Korea.

- 1975** Established "KYUNG-IL INDUSTRY, Ltd."
Manufactured FRP Open Type Lifeboats
Delivered the 1st Lifeboat of HYUNDAI Heavy Industries (Open Type)
Emerged to HYUNDAI Precision Industries, a subsidiary of HYUNDAI Group
Commenced to produce GRP Totally Enclosed Lifeboat
Manufactured MotorYacht 'Elephant54ft' and exported to USA
Manufactured MotorYacht 'PMYC 43ft' and exported to USA
Manufactured Motor Yacht, Sonata 31ft and exported to SE Asia
Manufactured FRP Totally Enclosed Free Fall Lifeboats
- 2000** Separated from HYUNDAI Precision Industries
Established "HYUNDAI LIFEBOAT Co. Ltd."
Awarded with "The Tower of USD 5 million Export"
Acquired MED mark for domestically lifeboat engine
Developed and Manufactured Sail Yachts 31ft
Developed ICE CLASS Lifeboat and delivered to Samsung Heavy Industries
Succeeded in domestically developed 44-seater Totally Enclosed Lifeboat
Recognized as Venture Corporation (Specialized in R&D)
Established "BADA Heavy Industry Co., Ltd." and expansion of business
Established "HYUNDAI YACHT Co., Ltd."
Awarded with "The Tower of USD 10 million Export"
Established of "HLB NETWORKS"
- 2010** Selected as the "World Class Products" by Ministry of Knowledge & Economy
Developed the 35-seater Free Fall type Lifeboat
Succeeded in GRP Pipe Development
Awarded with "The Tower of USD 20 million Export"
Merged with "HLB Co., Ltd." as a listed company
Completion of GRP PIPE Factory
Succeeded in Unmanned Surface Vehicle Development
Succeeded in 45Knots High-Speed Boat Development
- 2020** Contracted Manufacturing ODM in China
HLB Ulsan Factory Renovation



PRODUCTION FACILITY

FACTORY AND PRODUCTION FACILITIES

Test shop & Yard	10,554m ²
Laminating & Assembly shop	2,520m ²
Manufacturing shop	2,421m ²
Engine shop	520m ²
Warehouse	830m ²
Office	2,350m ²

Our lifeboats and rescue boats are designed and certified in accordance with

- SOLAS LSA Code
- IMO Res. MSC 272 (85)
- Res.MSC.317 (89), Res.MSC.320 (89), MSC.1/Circ.1392, MSC.1/Circ.1393
- Class & National Regulation to be applied
- Gulf of Mexico
- USCG REQUIREMENTS
- NR-30 (Brazilian Authority)

Approved by following world famous administrative institutions and classification societies

- CE (MED), AMSA KG and etc
- ABS, BV, GL, LR, NK, RS, KR, DNV and etc

MAJOR CLIENTS



R&D

RESEARCH AND DEVELOPMENT

HLB has developed and secured its own technologies since 2004, and invested in hiring skilled personnel to enhance its competitive edge and find new growth potential. Thanks to these efforts, we built up the creative R&D system, which constantly improves our technologies and comes up with new strategy in this fast changing market trend.

Domestically Developed Technology for Lifeboat Engine

Development of 29HP Engine and Reducer (Patent Application) Acquired Certificate for 29HP Ice Class (-45)

Development of 35P FREE FALL DAVIT

Development of New Davit DNV Class Type

Domestically Developed Technology for New Generation Hook Release Sys. for Lifeboat

Development of 3.5 Ton Hook and 6 Ton Hook

Domestically Developed Technology for Totally Closed Lifeboat

Development of New Fan Shape (Standard 40/25/60 Seater)

Domestically Developed Technology for Small Free Fall Lifeboat and Davit

Development of 25 Seater Lifeboat (22.5M) and Davit

Domestically Developed Technology for Lifeboat Engine(23HP)

Development of 23HP Lifeboat Engine

Development of Rescue Boat

Development of Fast Boat and Davit

Development of High Value Lifeboat

Development of 60 Seater Free Fall Drop Height Lifeboat

Development of Lifeboat for Cruise and Tender Boat

Development of Lifeboat for Cruise and Tender Boat and Davit

Development of High Altitude Free Fall

Development of High Altitude(25.7M) Free Fall Lifeboat

Development of High Speed Rescue Boat

Development of High Speed(30Knots) Rescue Boat and Self Righting

Technology Innovation & Development Team

Developed the composite material pipe application technology which endured the high pressure(25bar) and fire resistance(Level3) of marine plants.

BUSINESS AREA

HLB, with 40 years of rich history,

In addition, we have various lines of special ships such as high-speed RIB boat, fishing boat and maritime leisure boat etc. according to customer's needs. The experts in Lines design and engineering team as well as the most modern production facilities, make HLB a world leader for innovative and inspired special ship field.

Going forward, HLB is now striving to become a global leading composite material manufacturer combining the strength of world-leading technologies and highly-skilled human resources.

LIFEBOAT

HLB Lifeboat is an innovative and user friendly product that ensures long-term stable operation and the safety of the ship's crew in emergency situations.



RESCUE BOAT

HLB Rescue Boat guarantees rapid rescue in any situation at sea.



DAVIT

HLB davit system ensures the highest reliability and stability.



SPECIAL SHIPS

Manufactures special ships of various configurations according to customer's needs.



ENGINE

Self-developed engine that has acquired global certification.



WORLD WIDE SERVICE

Total solution company with 90 agents in 46 countries in the world.



GRAVITY LIFEBOAT

- GRP gravity lifeboats launched by wire falls are most commonly used for evacuation purpose in all kinds of ships.
- Lifeboats are suitable for use on board the oceangoing vessels under worse sea condition.
- The tanker versions have good fire protection performance.
- Davits are installed on both side of ship and is the lifesaving and salvaging equipment installed universally in various ships. Launching and pulling up lifeboat, and rescues ship safely from the water through the fall and winch.



LIFEBOAT SPECIFICATION

MODEL	SPECIFICATION		LIGHT WEIGHT(kg)	FULL WEIGHT(kg)
	L X B X D (m)	CAPACITY (p)		
HLB-NM50C	5.00 x 2.20 x 1.10	26	2,165.0	4,310.0
HLB-NM50F		26	2,465.0	4,610.0
HLB-NM57C	5.70 x 2.32 x 1.10	30	2,273.0	4,748.0
HLB-NM57F		30	2,611.0	5,086.0
HLB-NM58C	5.85 x 2.78 x 1.20	45	2,780.0	6,493.0
HLB-NM58F		45	3,050.0	6,763.0
HLB-NM65C	6.50 x 2.32 x 1.10	36	2,630.0	5,600.0
HLB-NM65F		36	2,950.0	5,920.0
HLB-NM75C	7.55 x 2.78 x 1.20	60	3,000.0	7,950.0
HLB-NM75F		60	3,350.0	8,300.0
HLB-NM85C	8.50 x 3.20 x 1.25	85	4,354.0	11,366.0
HLB-NM85F		85	4,685.0	11,698.0

GRAVITY LIFEBOAT (TRADITIONAL VER.)



OFFSHORE LIFEBOAT SPECIFICATION

MODEL	SPECIFICATION		LIGHT WEIGHT(kg)	FULL WEIGHT(kg)	RELEASE MECHANISM
	L X B X D (m)	CAPACITY (p)			
HLB105T	10.5x2.85x1.226	SOLAS-84	5,579.0	12,509.0	TALON 9.0
		GOM-70	5,529.0	12,529.0	
HLB105F	10.5x2.85x1.226	SOLAS-84	6,000.0	12,930.0	TALON 9.0
		GOM-70	5,950.0	12,950.0	
HLB102T	10.21x3.26x1.35	100	5,865.0	14,115.0	TALON 9.0
HLB102F	10.21x3.26x1.35	100	6,250.0	14,500.0	TALON 9.0

T : Non Tanker Version F : Tanker Version R : After Boarding Type A : Upgraded Model

LIFEBOAT SPECIFICATION

MODEL	SPECIFICATION		LIGHT WEIGHT(kg)	FULL WEIGHT(kg)	RELEASE MECHANISM
	L X B X D (m)	CAPACITY (p)			
HDL 65CT	6.5x2.4x1.05	25	2,415.0	4,477.5	TALON II 4.0
HDL 65CF	6.5x2.4x1.05	25	2,806.0	4,868.5	TALON II 4.0
HDL71CTA	7.1x2.4x1.125	32	2,630.0	5,270.0	TALON II 4.0
HDL71CFA	7.1x2.4x1.125	32	2,879.0	5,519.0	TALON II 4.0
HLB65T	6.5 x 2.3 x 1.2	36	1,955.0	4,925.0	TALON II 4.0
HLB65F	6.5 x 2.3 x 1.2	36	2,150.0	5,120.0	TALON II 4.0
HDL75CT	7.5x2.8x1.25	40	3,300.0	6,279.0	TALON II 4.0
HDL75CF	7.5x2.8x1.25	40	3,559.0	6,899.0	TALON II 4.0
HDL85CNT	8.5x3x1.35	61	4,025.0	9,057.5	TALON II 6.0
HDL85CNF	8.5x3x1.35	61	4,425.0	9,457.5	TALON II 6.0

T : Non Tanker Version F : Tanker Version R : After Boarding Type A : Upgraded Model

FREE-FALL LIFEBOAT

Free-fall system is for fast and safe escape from a vessel.

Our design uses deck space to the minimum and makes it possible for lifeboat to launch even from 25.7 meters height.

Free fall lifeboat davit is designed to ensure fast and safe rescue of human life.

It is the most excellent launching equipment with high reliability and stability from mechanical and structural perspective.



LIFEBOAT SPECIFICATION

MODEL	SPECIFICATION		LIGHT WEIGHT(kg)	FULL WEIGHT(kg)
	L X B X D (m)	CAPACITY (p)		
HLB-NM59FC	5.90 x 2.75 x 1.06	26	3,055.0	5,200.0
HLB-NM59FF		26	3,270.0	5,415.0
HLB-NM67FC	6.70 x 2.75 x 0.90	31	3,677.0	6,234.0
HLB-NM67FF		31	3,968.0	6,443.0

FREE-FALL LIFEBOAT (TRADITIONAL VER.)



LIFEBOAT SPECIFICATION

MODEL	SPECIFICATION		LIGHT WEIGHT(kg)	FULL WEIGHT(kg)	DROP HEIGHT(m)
	L X B X D (m)	CAPACITY (p)			
HDFN35T	7.950x3.070x1.550	35	4,814	7,720	25.7
HDFN35F	7.950x3.070x1.550	35	5,114	8,002	25.7
HDFN25T	7.950x3.070x1.550	25	4,585	6,647.5	25.7
HDFN25F	7.950x3.070x1.550	25	4,885	6,947.5	25.7

T : Non Tanker Version F : Tanker Version

RIGID RESCUE BOAT

We have the greatest market share in rescue boat, offshore facilities, coast guard service, patrol and other rescue services.

The handrails are arranged for each side of the rescue boat for passenger.

We offers a brand new range of rescue boat systems for offshore applications, merchant & passenger vessels.



FAST RESCUEBOAT SPECIFICATION

MODEL	SPECIFICATION		LIGHT WEIGHT(kg)	FULL WEIGHT(kg)
	L X B X D (m)	CAPACITY (p)		
HLB-NM60R (INBOARD)	6.00 x 2.30 x 0.87	3-15P	1,175.0	1,412.5
HLB-NM60R (OUTBOARD)	6.00 x 2.30 x 0.87	3-15P	1,734.0	2,622.5

RESCUEBOAT SPECIFICATION

MODEL	SPECIFICATION		LIGHT WEIGHT(kg)	FULL WEIGHT(kg)
	L X B X D (m)	CAPACITY (p)		
HLB-NM43R	4.30 x 1.86 x 0.78	6	605.0	1,100.0
HLB-NM45R	4.50 x 1.86 x 0.78	6	700.0	1,195.0

RIGID RESCUE BOAT (TRADITIONAL VER.)



FEATURES

- Fully complying with SOLAS and MED regulations
- Customized davit and multi-purpose crane
- Capacity for 1 to 15 persons
- Supplied with gasoline outboard motor propulsion system

FAST RESCUEBOAT SPECIFICATION

MODEL	SPECIFICATION		LIGHT WEIGHT(kg)	FULL WHEIGHT(kg)
	L X B X D (m)	CAPACITY (p)		
HDFR600	6.000x2.060x1.030	SOLAS-6 GOM-6	1,580	2,075 (solas) 2,180(gom)
HDFR680	6.800x2.420x0.460	15	2,250	3,488

RESCUEBOAT SPECIFICATION

MODEL	SPECIFICATION		LIGHT WEIGHT(kg)	FULL WHEIGHT(kg)
	L X B X D (m)	CAPACITY (p)		
HDR420	4.20x1.75x0.678, 6knots	6	570	1,065
HDR475	4.75x2.0x0.820, 6knots	6	950	1,445
HDR570	5.7x2.03x1.03, 6knots	SOLAS-6 GOM-6	1,300	1,795 (solas) 1,900 (gom)

GRAVITY LIFEBOAT DAVIT

(HINGED GRAVITY TYPE)

This is installed on both sides of a ship and is the lifesaving and salvaging equipment installed universally in various ships.

It launches and pulls up a life boat & rescue boat to rescue people with safety from the water.

It operates with falls and a winch.



DAVIT SPECIFICATION

MODEL	CAPACITY (p)	M.W.L (kg)	REMARKS
BDH58S	Max. 32	5,800	
BDH70S	Max. 40	7,000	1. Gravity lowering type
BDH90S	Max. 61	9,600	2. SOLAS as amended
BDH125S	Max. 90	12,500	3. Elec. Winch driven
BDH200S	Max. 150	20,000	4. M.E.D. Type approved.

FREE-FALL LIFEBOAT DAVIT

This equipment is used to launch free-fall type life boat, and is installed at stern of a ship. Under IMO Pact, the installation of this equipment has been mandatory for freight ships since July 2006.

Free fall lifeboat davit of BADA Heavy Industries is designed to ensure fast and safe rescue of human life, conforming to the recent standard of SOLAS.

It is the most excellent launching equipment with high reliability and stability from mechanical and structural perspective.



DAVIT SPECIFICATION

MODEL	CAPACITY (p)	M.W.L (kg)	REMARKS
BDF25S	Max. 25	7,200	
BDF35S	Max. 35	8,001.5	1. Free fall launching type
BDF90S	Max. 43	9,748	2. SOLAS rule as amended
BDF120S	Max. 60	15,750	3. Hyd. Winch operation
BDF150S	Max. 80	21,600	4. M.E.D. Type approved.

RESCUE BOAT / LIFE RAFT DAVIT [COMBINED TYPE]

DAVIT SPECIFICATION

MODEL	MAX. WORKING LOAD		REMARKS
	RESCUE BOAT	LIFE RAFT	
BDR25S	1,100 Kg	2,350 Kg	1. Elec.Hoist & Hyd. Slewing single arm type.
BDR35S	1,100 Kg	3,300 Kg	2. M.E.D. Type approved.

RESCUE BOAT DAVIT

[A-FRAME ELEC. PIVOT HINGE TYPE]

MODEL	HOISTING	LOWERING SPEED	MAX. WORKING LOAD
BDP065	Min. 18m/min	Min. S = 0.4+0.02(H)	1,200 Kg

FAST RESCUE BOAT DAVIT

[A-FRAME PIVOT HINGE TYPE]

MODEL	HOISTING SPEED	LOWERING SPEED	MAX. WORKING LOAD
BDFA33S	Min. 48m/min	Min.S=0.4+0.02(H) Max.1m/sec	3,500 Kg

SPECIAL SHIPS

RIB FOR MILITARY (8.5m)

HLB is making special-purpose craft using the latest design and shipbuilding techniques.

The multi-purpose, high-speed RIB with advanced equipment expects good evaluation from domestic and overseas customers.

Their expert in Lines design and engineering team, as well as the most modern production facilities, make HLB a world leader for innovative and inspired FRP shipbuilding solutions.

HLB also assists local shipbuilding and Special shipbuilding projects anywhere in the world.



FRONT INSTRUMENT PANEL STEERING WHEEL ENGINE CONTROL LEVER
RADAR & SPOT LIGHT LIFTING HOOK GPS PLOTTER

SPECIFICATION

TYPE	RIB(Rigid Inflatable Boat)
MODEL	HSB 8.5R
LENGTH	8.5m
OVERALL WIDTH	3.0m
CAPACITY(PERSONS)	12
MAX SPEED (3persons on boarding)	45knots
ENGINE	O/B MOTOR 250hp 2EA

SHIPS FOR SPECIAL PURPOSE



ALUMINUM BOAT



FISHERY INSPECTION BOAT



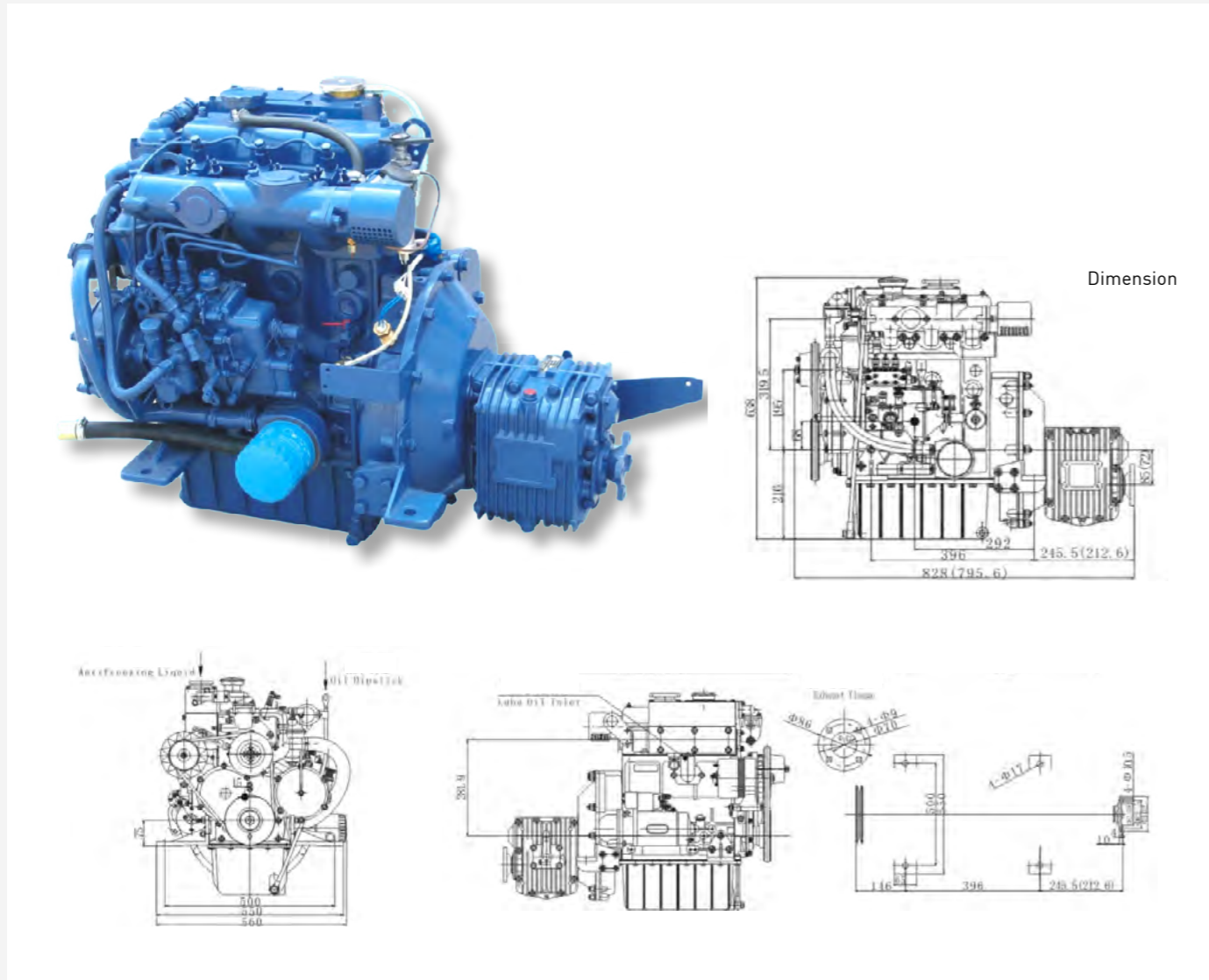
FISHING BOAT



PATROL BOAT

ENGINE

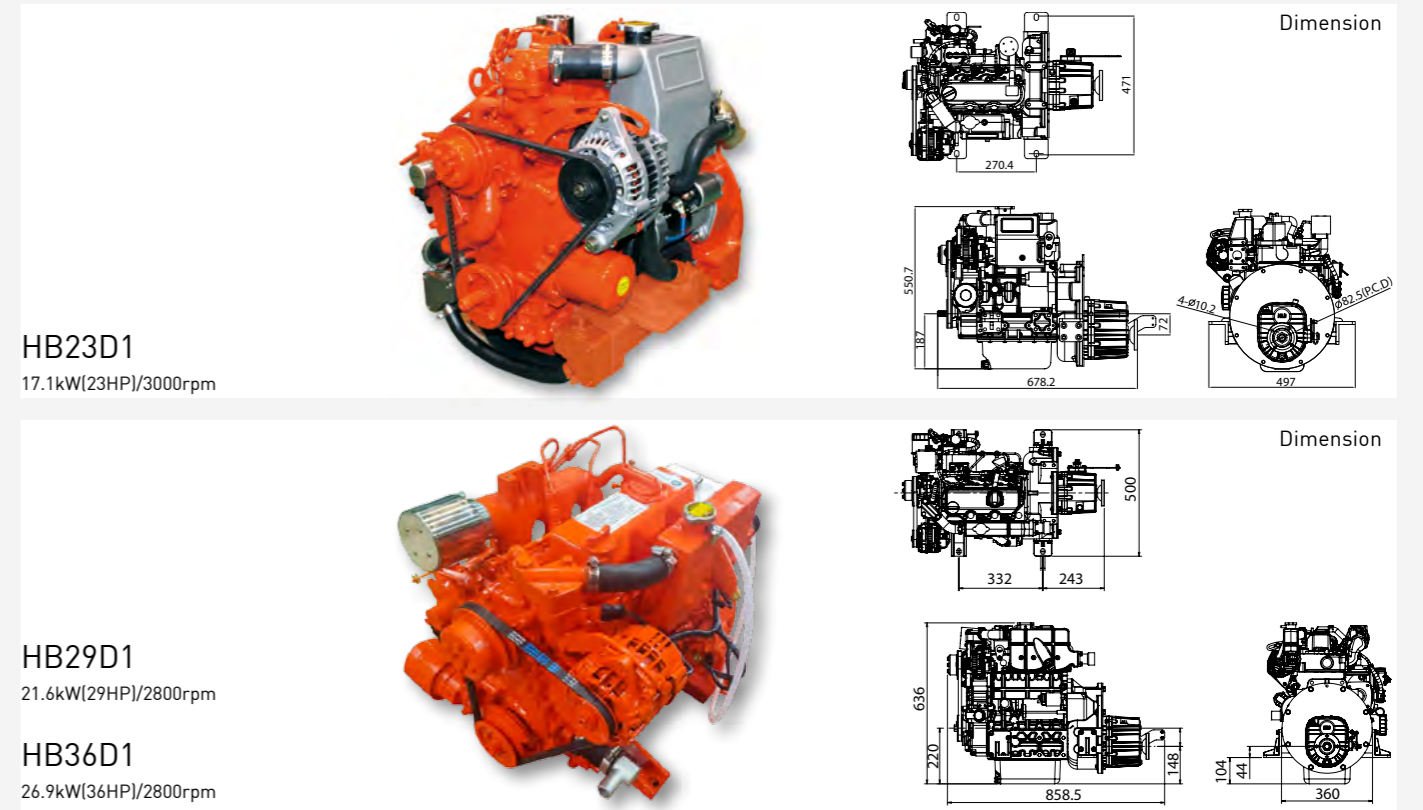
- MARINE ENGINE



SPECIFICATION

Model	380J-1	380J-3
Type	Three cylinders, In-line vertical, four stroke, water cooling, direct injecting nature inspiration	
Cylinder x bore (mm)	80 x 90	
Total piston displacement (L)	1.357	
Compression	18:1	
Disel engine output/Rated (KW/r/min)	20.6 / 2800	
Disel engineMX output/Rated (KW/r/min)	22.6 / 2890	
Starting method	Electric (Option spring starting, Manual starting or Hydraulic motor starting)	
Direction of rotation (From Output)	Clockwise	
Gear box type	SCG025	ZF25M
Reduction ratio	Ahead 2.74	Astern 1.95
Engine overall dimension (mm)	200	
Net weight (Kg)	828 x 560 x 638	

- MARINE ENGINE



HB23D1
17.1kW(23HP)/3000rpm

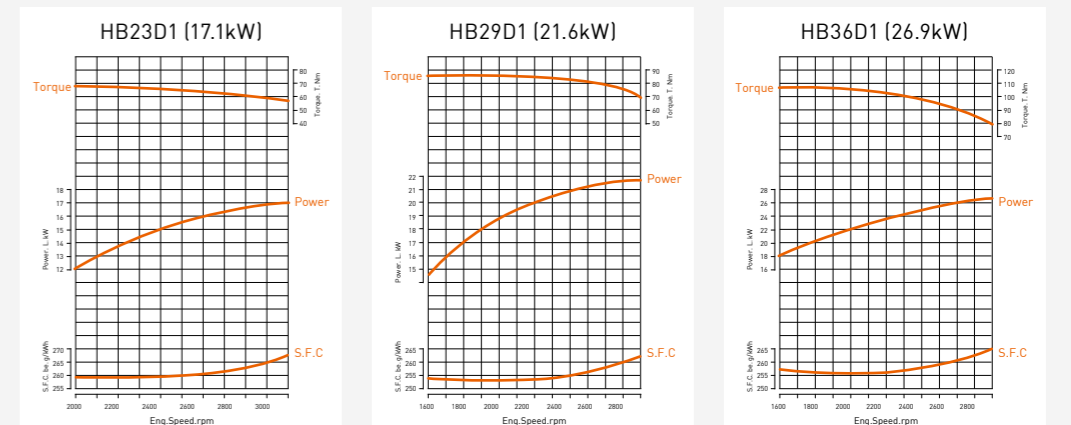
HB29D1
21.6kW(29HP)/2800rpm

HB36D1
26.9kW(36HP)/2800rpm

SPECIFICATION

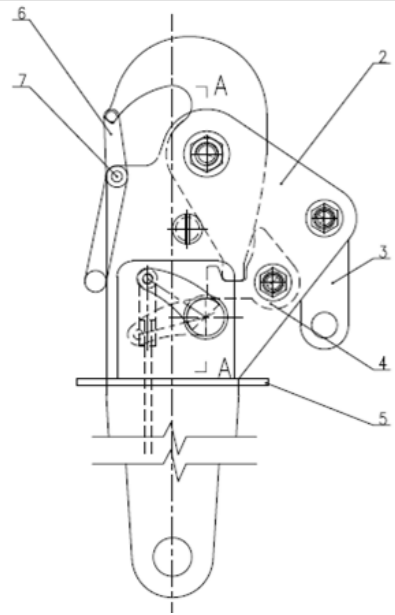
Model	HB23D1	HB29D1	HB36D1
Power (kW/HP)/rpm	17.1(23)/3000	21.6(29)/2800	26.9(36)/2800
Type	In-line vertical, Water-cooled 4-cycle Diesel engine		
Emission Standard	Tier 4	Tier 3	
Aspiration	Natural aspirated		
Combustion system	In-direct injection		
Cooling system	Keel cooler cooling type		
Bore X stroke (mm)	75x76	80 x 92.4	87 x 92.4
Displacement (cc)	1,007	1,393	1,647
Length (mm)	740.5	858.5	
Width (mm)	500	500	
Height (mm)	559.5	636	
Dry weight (kg-f)	130	193	199
Alternator	12V-50A	12V-50A	
Lubrication oil	SAE15W-40		
Transmission	HBG 200		
Transmission Ratio (forward/backward)	2.54:1 / 2.43:1		

PERFORMANCE CURVE



HOOK

- HK40 : Talon II 4.0 SWL 4.0 ton
- HK65 : Talon II 6.5 SWL 6.5 ton



ROUND CAM

The Round cam shall be designed so that, when it is fully in the closed position, the weight of the lifeboats does not cause any force to be transmitted to the operation mechanism.

SAFETY PIN

Safety Pin locks the hook against accidental release and ensures the correct hook reset when inserted.

CORROSION RESISTANCE

Corrosion resistant materials such as Duplex Stainless Steels are used and it means to no need coating or galvanizing to long-term operation.

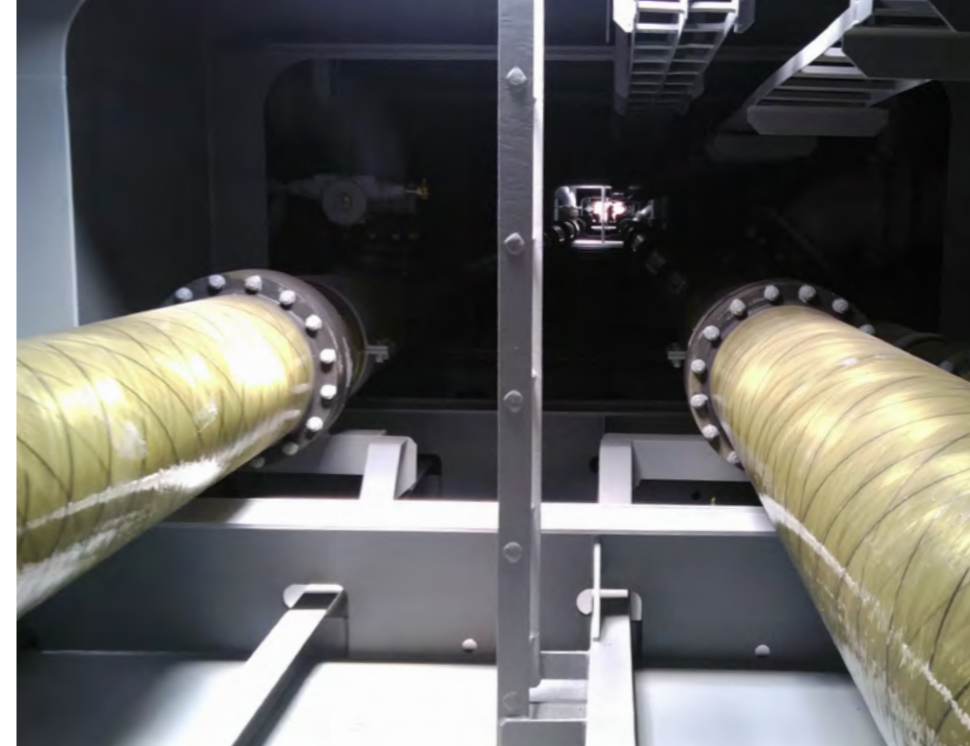
EASY TO OPERATE AND MAINTAIN

Clearly visible and easily understood indications make the operation and maintenance with the hooks safe and fast.



The HLB's TALON II Hook Range

- Talon II 4.0 : SWL 4.0 ton
- Talon II 6.0 : SWL 6.0 ton
- Talon 9.0 : SWL 9.0 ton



HLB Co., Ltd.

(ex, Hyundai Lifeboats)

Address 216-53 Dangwol-Ro, Onsan-Eu
Ulju-Gun, Ulsan, Korea

Tel +82 52 240 3563 / 3565

Fax +82 52 237 4855

E-mail Lloy81@hdboat.com

Homepage www.hibpipe.com

BADA Heavy Industries Co., Ltd.

Address 135-56 Jinsandae-Ro,
Jinyoung-Eup, Kimhae, Korea

Tel +82 55 720 1021~1023

Fax +82 55 345 2136

E-mail bada@badahi.co.kr

Homepage www.badahi.co.kr

HLBNETWORKS

Address 216-53 Dangwol-Ro, Onsan-Eup,
Ulju-Gun, Ulsan, Korea

Tel +82 52 240 3529~3534

Fax +82 52 237 4854

E-mail service@hdboat.com

WORLD WIDE SERVICE

HLB NETWORKS CO., LTD.

Contact point
 216-53 Dang wol-Ro, Onsan-Eup, Ulju-Gun, Ulsan, Korea
 Tel. +82-52-240-3529~3534
 Fax. +82-52-237-4854
 E-mail. service@hdboat.com

FULLY COMPLYING WITH NEW IMO-MSC/CIR. 1093

As you know, the new IMO regulation [MSC Circ.1206, R152 (78)] came into force since July 1st,2006. It stipulates that only service personnel who are trained and authorized can carry out lifeboats maintenance, repair and inspection.

Having believed that lifeboats to save human lives ironically used to cause various accidents due to service by uncertified engineers, IMO arranged new regulations mentioned above in order to prevent marine accidents arising from improper inspection or repair.

During past 3 years we have made every effort to minimize customer's inconvenience caused by the regulations and to offer best service with respect to inspection and repair. As the result, we have built up service network of 94 stations in 40 countries, with more than 250 service engineers trained and certified over the world as of January 2010.

For the purpose of specialization of lifeboat business, we took over BADA Heavy Industries (former Dae Ryuck) as one of our subsidiary companies in 2008 and incorporated BADA's training and certification system into ours, and we provide following services through our own qualified engineers to suffice customers' satisfaction.

TRAINING COURSE

HLB Networks Co., Ltd. offers a complete training & authorization program on our brands as follows according to new IMO-MSC/Circ.1093. Training at the HLB Networks Training Center for operation and maintenance of system. Authorization programs for any kind of purpose. HLB Networks service engineer and nominated service partners.



SERVICE

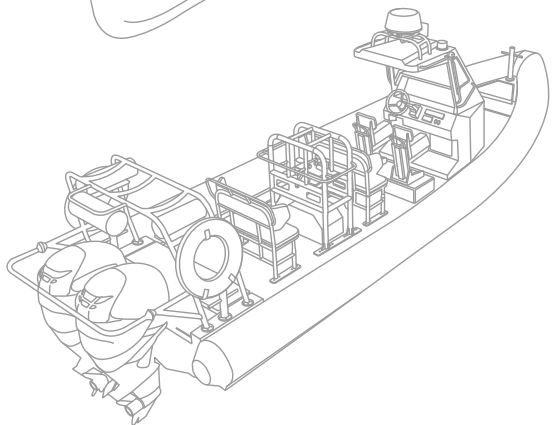
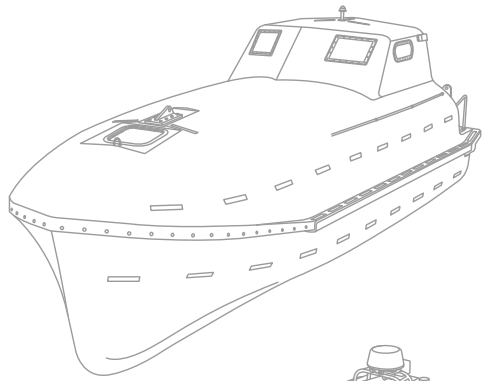
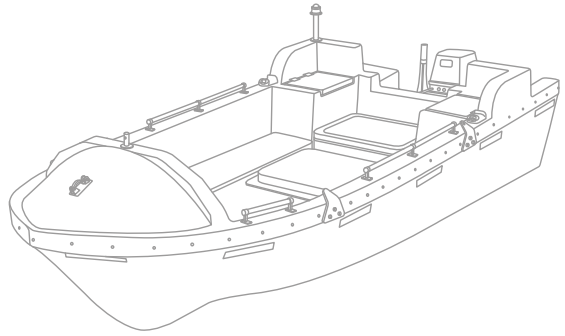
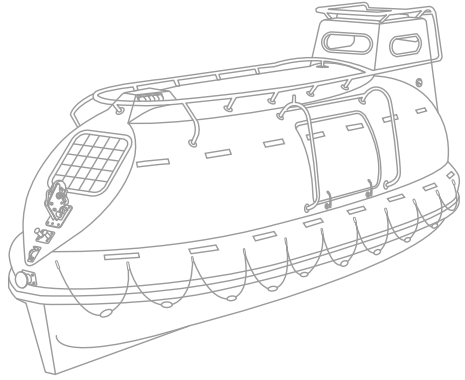
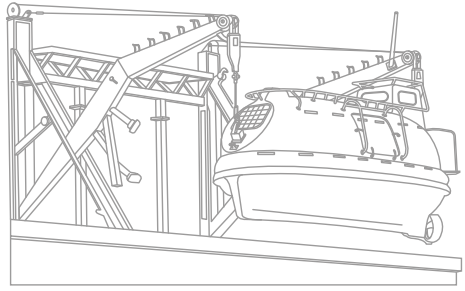
Worldwide service from your nearest HLB Service Facilities. SOLAS mandatory service for 1~5 years by your Original Equipment Manufacturer [OEM].



SALES

HLB Networks is the leading provider for marine engine and lifeboat genuine spare parts according to SOLAS regulations and manufacturer's specifications.





216-53, Dangwol-ro, Onsan-eup, Uiju-gun, Ulsan City, Korea
Tel. +82-52-240-3500 Fax. +82-52-237-4855
e-mail. hdboat@hdboat.com
www.hdboat.com

